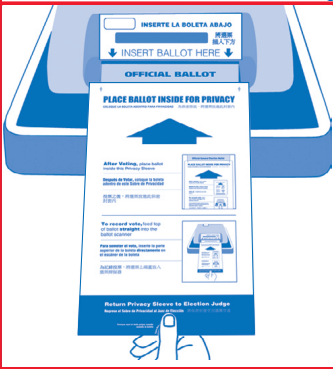
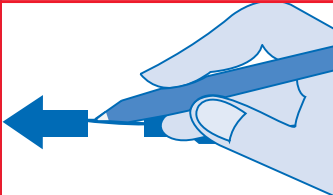


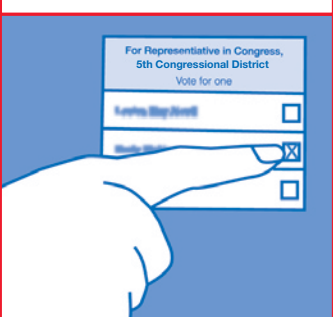
VOTING INSTRUCTIONS

Chicago voters will have two ways to cast ballots in every precinct. The **optical scan** system uses a paper ballot. The **touchscreen** allows you to vote electronically and creates a paper record of your votes that stays secured in the printer.



Optical scan (paper ballots)

1. The election judge supplies a special pen and the paper ballot.
2. To vote, connect the arrow to the right of the name. If you make a mistake, ask the judge for a new ballot.
3. Write-in votes: In the blank space provided, write in the candidate name and connect the two parts of the arrow. **DO NOT** write in candidates who are on the ballot or make any other marks.
4. After voting, cover the ballot with the privacy sleeve and insert the ballot into the ballot scanner.



Touchscreens

The touchscreen is designed to assist voters with disabilities, but anyone may use this system.

1. The election judge will supply a voter card. Push the card into the yellow slot until you feel it click.
2. Select your language. Make choices like you would use a bank ATM. If you want to change a selection, touch your first choice again – and then make a new selection.
3. To write-in votes, follow the instructions on the screen.
4. Look at the printed record of your choice (which stays in the machine). When complete, touch “cast ballot” and return the voter card to the election judge.



Yes, you may bring these instructions into the polling place!